

Notes

“There is an honor in business that is the fine gold of it; that reckons with every man justly; that loves light; that regards kindness and fairness more highly than goods or prices or profits. It becomes a man more than his furnishings or his house. It speaks for him in the heart of everyone. His friendships are serene and secure. His strength is like a young tree by a river.”

-Henry Wadsworth Longfellow



A Family Serving Yours Since 1928

4600 County Line Road, Mount Pleasant, WI 53403

Phone: 262-552-9000 Fax: 262-552-9100

Email: dlfh@draeger-langendorf.com

www.draeger-langendorf.com



General Price List

An itemized price listing of service offerings effective as of January 1, 2024, subject to change without notice



A GUIDE FOR SELECTING FUNERALS

A funeral is a meaningful event. One that, when properly planned, can help ease the pain of separation which naturally accompanies death. It is a time of celebrating the dignity of life and it provides a unique occasion for family and friends to share expressions of remembrance and appreciation. We encourage each family to design the funeral service and all arrangements associated with the funeral in as personal and meaningful a way as possible. We can assist you in coordinating all of the details. This guide is designed to familiarize you with the services and products that comprise the different types of funeral arrangements. We feel it is important that you understand the scope of services that we provide and the costs of these services. We know that often death comes at a time when the survivors may be least prepared financially. We solicit your frankness in these matters and assure you that it is our policy to assist in any way possible.



Pictured from Left to Right: Bill Althaus, Mark Langendorf, Sarah Thoms, Mike Langendorf, Gary Langendorf, Brian Langendorf, Ashley Gustin.

Forwarding Remains to another funeral home	\$ 2,480.00
Includes Basic Services of Funeral Director and Staff, Local Transfer of Remains to Funeral Home, Embalming, and Transfer to Mitchell International Airport. These charges do not include any arrangements for visitation/viewing, ceremony, merchandise or charges for the services of others, including the casket air tray required by the FAA.	
Receiving Remains from another funeral home (in a casket)	\$ 1,600.00
Includes Basic Services of Funeral Director and Staff, Transfer from Airport, Necessary Adjustments, and use of Funeral Coach. These charges do not include any arrangements for visitation/viewing, ceremony, merchandise or charges for the services of others.	
with graveside service add	\$ 695.00
one day visitation with ceremony and/or committal service add	\$1,695.00
two day visitation with ceremony and/or committal service add	\$ 1,895.00
When a remains is shipped to us in a shipping container, services are selected from our Itemized Price List.	
Memorial Service when Cremation occurs elsewhere.....	\$ 3,205.00
Includes Basic Services of Funeral Director and Staff, Facilities and Staff for Visitation and Memorial Service held on the same day or evening, Register Book, Memorial Cards, Acknowledgement Cards.	
Disinterment.....	\$ 225/hr.
Re-Casketing during Disinterment.....	\$2000.00

No funeral merchandise (casket, urn, burial vault, clothing, etc.) is included in any packages unless specifically stated, nor do they include any services provided by others (cemetery charges, flowers, newspaper notices, clergy or musician honorariums, certified copies of the death certificate, coroner/medical examiner fees, etc.)

Our Payment Policy

We require full payment for all services at the time of arrangements before the service date and time can be scheduled. Payment can be made in the form of cash, personal check, cashier’s check, or credit card.

Benefits from an insurance policy can be assigned to the funeral home directly from the insurance company. We use an assignment company called Claimcheck to handle our insurance assignments. This company will advance all or a portion of the benefit due from the insurance company within 24 hours of verification of the insurance policy. Furthermore, the family can decide to have Claimcheck advance the family portion of the benefits within 24 hours as well. All funds that are advanced by Claimcheck will be assessed a 3.5% fee for the cash advance. You may choose to apply for the insurance benefits on your own to save the advancement fee. However, full payment of the services are required in order to proceed with scheduling the date and time of the service.



Cremation Service Packages

If you want to arrange a direct cremation, you can use an alternative container. Alternative containers encase the body and can be made of materials like fiberboard or composition materials (with or without an outside covering). The container we provide is a basic cardboard cremation container. The following prices do not include the County Medical Examiner's fee to sign cremation permit which is required by law.

#1 Direct Cremation

Includes Basic Services of Funeral Director and Staff, Local Transfer of Remains to Funeral Home, Disinfection of Unembalmed Body, necessary preparation for dignified identification, Refrigeration, Utility Car, Alternative Container (if selected), and Crematory Fees. This price does not include arrangements for any type of services.

when container is supplied by purchaser, or casket is purchased from funeral home \$ 3,190.00

with alternative container \$ 3,295.00

#2 Graveside Service following Direct Cremation

Includes all items of direct cremation plus services of a funeral director for a graveside service.

when container is supplied by purchaser, or casket is purchased from funeral home \$ 3,440.00

with alternative container \$ 3,495.00

#3 Memorial Service following Direct Cremation \$ 5,400.00

Includes Basic Services of Funeral Director and Staff, Local Transfer of Remains to Funeral Home, Disinfection of Unembalmed Body, necessary preparation for dignified identification), Refrigeration, Utility Car, Facilities and Staff for Visitation and Memorial Service held on the same day or evening, Register Book, Memorial Cards, Acknowledgement Cards and Crematory Fees.

with a visitation the night before \$ 5,550.00

#4 Traditional funeral service followed by cremation

Includes all items of our Traditional Service Packages and Crematory Fees. A cremation casket will need to be purchased for this package. This package does not include procession to cemetery.

with traditional two-day service \$ 6,515.00

with traditional one-day service \$ 6,315.00

#5 Graveside service for cremated remains.....\$200.00

Other Service Options

Immediate Burial

Includes Basic Services of Funeral Director and Staff, Local Transfer of Remains to Funeral Home, Disinfection of Unembalmed Body, necessary preparation for dignified identification, Refrigeration, Utility Car, Funeral Coach, and Alternative Container (if selected). This price does not include cemetery charges, outer burial container, any charges made by others, or arrangements for any type of services.

when container is supplied by purchaser or purchased from funeral home \$ 2,995.00

with alternative container \$ 3,995.00

To help you understand...

It is your right, and our desire, that you have as complete an understanding as possible regarding the cost of our services. The biggest factor is the time element in terms of our personnel and the use of the funeral home facilities. The maintenance of this service is unending; that is, it must be available 24 hours every day of the year. There needs to be a licensed funeral director available 24 hours a day, 365 days a year. Therefore, ours is a 168-hour week and not the 40-hour week which is the accepted standard. Many phases of our work are apparent; others are not. The following analysis of some of these details will help you to understand that no two funerals are exactly alike. Traditions, customs, social standing, personal feeling, financial ability and a multitude of other influences affect each funeral. Our services must conform to each individual family's wishes and their personal and religious needs. The services listed below require an average of over 60 work-hours per funeral. In addition to these services, the licensed funeral director is also available following the funeral services to assist the family. Generally, the charges for a funeral are divided into five categories:

I) Professional Services

A) Complete arrangements, supervision and direction of funeral

1) Meeting with the family to secure vital statistic information, obtain obituary information, select

services and merchandise of their choice, complete itemized statement of goods and services, and

directing all aspects of the funeral

2) Coordinate times of the following services as needed:

Clergy

Civic Organizations

Cemetery or Crematory

Fraternal Organizations

Burial Vault Company

Veteran's Associations

Automotive Equipment

Catering/Restaurant Reservations

Hairdresser or Barber

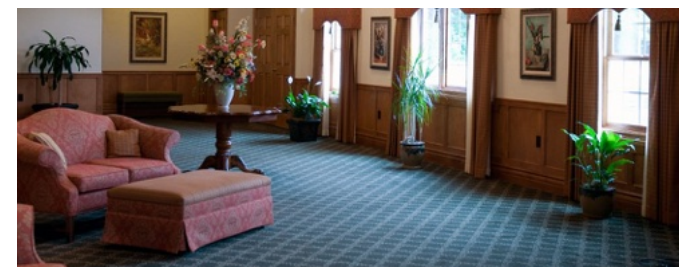
3) Complete death certificate with vital statistic information

4) Obtain the signature and medical information from the attending physician, coroner or medical examiner

5) File completed and signed certificate with the Register of Deeds or Registrar of Vital Statistics in the municipality where the death occurred, and obtain certified copies as necessary for the family's needs

6) Distribute necessary obituary information to the newspapers and radio stations requested by the family

7) Reviewing and arranging floral tributes for the visitation and funeral services. Delivery of the flowers to the residence, cemetery, local nursing home or church





- 8) Careful removal of all flower and sympathy cards for the family to acknowledge
 - 9) Assist the family in completing the necessary forms
 - Required State and Federal Forms
 - Cemetery or Crematory
 - Social Security
 - Railroad Retirement
 - Veteran's Benefit
 - Veteran's Flag
 - Veteran's Marker
- B) Preparation and Care of Deceased including embalming when requested**
- 1) Hygienically prepared and disinfected to insure protection to personnel and the public. Contagious diseases require special care and treatment.
 - 2) Embalming
 - 3) Shampooing and shaving
 - 4) Dressing and casketing
 - 5) Applying cosmetics. Extra care is necessary with regard to extreme weight loss, bruises, cuts, abrasions, and other trauma.
 - 6) Hairdressing
- C) Additional Professional Personnel**
- 1) Answering all telephone calls – give out funeral information to family, lodge members, business associates, florists and friends with regard to funeral services to be held.
 - 2) Attendance during visitations
 - 3) Assist in conducting the funeral service according to the family's wishes
 - 4) Parking family cars for funeral cortege (procession)

II) Use of Facilities

A) Fixed Overhead

This item is our monthly bills totaled for the year and divided by the number of services that were held that year. Included in fixed overhead:

Taxes	Building & Grounds Costs
Utilities	Building & Grounds Maintenance
Insurance	House Cleaning & Supplies
Regulation & Licensing	Merchandise Display & Inventory
Required Continuing Education	Stationary Supplies

Transportation Needs

Medical Examiner Pouch	\$165.00
Carrier for Air Transportation	\$300.00
Sealed Steel Carrier for Air Transport (when required by regulations)	\$800.00
Transportation To/From Milwaukee Mitchell Field	\$255.00
Transportation To/From Chicago O'Hare	\$400.00

For your convenience we offer several service packages.

You may however, choose to select these same services from our Itemized Price List. Items included in the Traditional Service Package are indicated on Itemized Price List with an asterisk (*)

Traditional Funeral Service Packages

Traditional Funeral Service Packages include basic charges for funeral director and staff, local transfer of remains to the funeral home, embalming, all other necessary preparations of the remains, use of facilities, staff and equipment for visitation and ceremony at our funeral home or additional staff for visitation and ceremony at other facility, graveside, committal or other disposition service; use of funeral coach and service/utility car, register book, memorial cards, and acknowledgment cards as needed. *Saturday and Sunday services incur a \$350 overtime charge.*

#1. Traditional Two-day Service \$ 6,160.00

A full service funeral arrangement including an evening visitation with visitation and/or ceremony the following day and burial or entombment following the ceremony.

#2. Traditional One-day Service \$ 5,955.00

A full service funeral arrangement including a visitation and ceremony taking place the same day. Burial or entombment may follow the ceremony.

#3. Traditional No Viewing Two-day Service \$ 5,350.00

A full service funeral arrangement including an evening visitation with visitation and/or ceremony the following day and burial or entombment following the ceremony. Embalming not included or required unless cemetery regulations are enforced.

#4. Traditional No Viewing One-day Service \$ 5,145.00

A full service funeral arrangement including a visitation and ceremony taking place the same day. Burial or entombment may follow the ceremony. Embalming not included or required unless cemetery regulations are enforced.





*For Visitation and Ceremony	
One day	\$1,095.00
Two day	\$1,395.00
*For Graveside, Committal, or other disposition services:	
\$ 450.00	
Includes funeral director coordinating the funeral arrangements at graveside, equipment and staff necessary to conduct graveside or committal service.	
For Scattering or other disposition of cremated remains:	
\$ 325.00	
Includes staff to scatter or otherwise dispose of cremated remains as requested by family.	

Service Related Items

*Registration Package	\$ 475.00
Includes register book, holy cards or memorial folders (100 count), and “thank you” cards as needed.	
Register Book	\$95.00
Memorial Folders / Holy Cards (per 100)	\$395.00
Acknowledgment “thank you” Cards (25 per box)	\$75.00
Order of Funeral Service, Obituary or Mass Programs (per 150 then \$2 each additional)..	\$300.00
Insurance Policy Processing.....	Per Assignment Company Current Fees

Other Services and Items Available

Personalized Photo Back Panel or Memorial Service Panel	\$295.00
Personalized Photo Reprint	\$95.00
Wood / Glass Veteran Flag Case for Burial Flag (prices starting at)	\$110.00
Bagpiper for Funeral Service (prices starting at)	\$300.00
Dove release at service or gravesite (prices starting at)	\$150.00
Balloon release at service or gravesite (per dozen)	\$ 95.00
Caskets (prices ranging from)	\$ 1425 and up
Outer Burial Container and Vaults (prices ranging from)	\$1495 and up
Urns For Cremated Remains (prices ranging from)	\$ 99 and up
Laminated Copies of Newspaper Obituary on Bookmarks (per copy)	\$8.00
Death certificate expediting fee	\$100.00
Video	\$400.00 (mp4 file only; no dvds)
Candles	\$60.00

B) Funeral Home Facilities and Equipment

This charge is made for time during arrangement conferences, visitation periods and the day of the service. It is used for capital improvements; replacing carpeting, drapes, chairs, furniture, funeral equipment and any other item not covered in the fixed overhead.

C) Preparation Room For:

- 1) Disinfection and Sanitation
- 2) Embalming
- 3) Autopsy Examination
- 4) Reconstructive Surgery when required
- 5) Dressing and Casketing

III) Merchandise

Merchandise may include items such as: Casket, Burial Vault, Cremation Urn, Clothing, Register Book, Memorial Cards and Acknowledgement Cards

IV) Transportation

This item includes all necessary specialized vehicles to complete all arrangements as dictated to us by the family of the deceased. We will also complete all necessary arrangements for all in-state and out-of-state transportation of the remains by air or automobile at an additional charge.

V) Cash Advanced Items

*****An insurance assignment from the beneficiary is required for this service*****

This represents all of the monies that we may advance for you, if necessary, such as cemetery or crematory charges, hired autos, newspaper charges, clergy honorariums, musician honorariums, certified copies of the death certificate, etc. Most of these items must be paid in advance; therefore we ask that payment for these items be made by the day of the services. However, exceptions are made for families that wish to receive one statement, that includes the above items, and will be paying for them with insurance proceeds.





Itemized Price List

The goods and services shown are those we can provide to our customers. You may choose only the items you desire. However, any funeral arrangements you select will include a charge for our basic services and overhead. If legal or other requirements mean you must buy any items you did not specifically ask for, we will explain the reason in writing on the statement we provide describing the funeral goods and services you selected. The list does not include prices for certain items that you may ask us to buy for you, such as cemetery charges, flowers, newspaper notices, clergy or musician honorariums, certified copies of the death certificate, coroner / medical examiner fees, etc. The prices for these items will be shown on your bill or statement describing the funeral goods and services you selected. We do not charge you for our service in arranging for cash advance items, however, they must be secured with the proceeds from an insurance policy.

Basic Services and Overhead

***Basic Charges for Services of Funeral Director and Staff \$ 2,750.00**
 This charge includes, but is not limited to: 24 hour availability of staff to respond to the initial request for service; coordinating the release of the remains from the place of death; liaison with doctor, medical examiner or coroner; arrangement conference with the family or responsible parties; implementation of funeral arrangements by coordination with cemetery, crematory, clergy, musicians, florists, etc.; preparation and placement of obituary notices; and preparation and filing of all necessary legal documents. Also included in this charge is an appropriate allocation of overhead expenses such as professional licensing, building and utility costs, taxes, insurance, legal and accounting fees, parking lot and grounds maintenance, equipment, furnishings, record keeping and administrative expenses. This fee for our basic services and overhead will be added to the total cost of the funeral arrangements you select. (This fee is already included in our charges for Service Packages, Direct Cremation, Immediate Burial, Forwarding Remains and Receiving Remains.)

Care and Preparation of the Deceased

***Embalming \$ 1500.00**
 Except in certain special cases, embalming is not required by law. Embalming may be necessary, however, if you select certain funeral arrangements, such as a funeral with public viewing. If you do not want embalming, you usually have the right to choose an arrangement that does not require you to pay for it, such as direct cremation or immediate burial.

Disinfection of unembalmed body \$ 695.00
 Required by Wisconsin State Statute HFS 136.04 when there is no embalming.
***Dressing, Casketing, and Cosmetology \$ 795.00**
 Necessary for all viewing, both public and private. Includes dressing the body and placing in casket or other container and application of cosmetics to embalmed bodies.
Necessary adjustments when receiving remains \$ 275.00
Refrigeration of unembalmed body (for 48 hours) \$250.00
Crematory Fee \$1200.00

Transportation

Our local service area is defined as Racine/Kenosha counties East of I-94.
 Additional miles are charged at \$3.50 per loaded mile, plus food and lodging as needed.
***Transfer of Remains: \$ 475.00**
 Includes 24-hour availability of professionally licensed personnel to make the necessary local transfer from the place of death to the funeral home with specialized vehicle and equipment.
***Funeral Coach (Hearse) \$ 475.00**
 Includes equipment and personnel for local transfer to cemetery/church
***Service/Utility Car \$ 375.00**
 Includes equipment and personnel for pre-service and post-service errands, deliveries, transport of equipment, and lead car for processions
Limousine (available at current livery charges)

Use of Facilities of Staff

For Visitation Only:
 Includes staff for visitation setup, use of our facility or local transportation of the remains and additional staff for visitation at other facility, placement of encased remains, display of floral arrangements and other mementos, supervision and attendance during the visitation.
Two day visitation \$ 975.00
One day visitation \$ 595.00
Private family viewing \$ 475.00

For Ceremony Only: \$ 595.00
 Includes funeral director coordinating the arrangements, supervision of service, staff attendants at the ceremony, use of our facility for ceremony or additional staff necessary to conduct the ceremony at other facility.

